

RESEARCH ARTICLE

Open Access



# Transcription factor TabHLH49 positively regulates dehydrin *WZY2* gene expression and enhances drought stress tolerance in wheat

Hao Liu<sup>1†</sup>, Ying Yang<sup>1,2†</sup>, Dandan Liu<sup>3†</sup>, Xiaoyu Wang<sup>1,4</sup> and Linsheng Zhang<sup>1\*</sup>

## Abstract

**Background:** As functional proteins, dehydrins are found in many maturing seeds and vegetable tissues under adverse environmental conditions. However, the regulation of dehydrin expression remains unclear.

**Results:** In this study, a novel drought stress-related bHLH transcription factor, TabHLH49, was isolated from a wheat cDNA library treated with the drought and cold stress by using yeast one-hybrid system. TabHLH49 protein possesses a typical conserved bHLH domain and is a Myc-type bHLH transcription factor. TabHLH49 was detected in the nucleus of tobacco epidermal cells, and the amino acid sequences at the C-terminus (amino acids 323–362) is necessary for its transactivation activity. Real-time PCR analyses revealed the tissue-specific expression and drought stress-responsive expression of *TabHLH49* in wheat. In addition, the verification in Y1H and electrophoretic mobility shift assays illustrated that TabHLH49 protein can bind and interact with the promoter of the wheat *WZY2* dehydrin. Furthermore, the dual-luciferase assays showed that TabHLH49 can positively regulate the expression of *WZY2* dehydrin. The transient expression and BSMV-mediated gene silencing of TabHLH49 also showed that TabHLH49 positively regulates the expression of *WZY2* dehydrin and improves drought stress resistance in wheat.

**Conclusions:** These results provide direct evidences that TabHLH49 positively regulates expression level of dehydrin *WZY2* gene and improves drought tolerance of wheat.

**Keywords:** Wheat, Dehydrin, Drought stress, bHLH transcription factor, Regulation mechanism

## Background

As an important food crop, wheat has been widely cultivated in most parts of northern China. However, the plants typically suffer from the different types of abiotic stresses including drought, cold damage, or salt injury during their growth and development periods, which can directly affect the overall wheat production.

As sessile organisms, plants have evolved the ability to synthesize a series of stress-responsive proteins to avoid or defend against adverse conditions. Late embryogenesis abundant (LEA) proteins act as functional proteins in helping to protect cells from direct dehydration. Based on their conserved sequence motifs, the LEA proteins have been grouped into seven distinctive groups [1]. Group 2 LEA proteins, also known as dehydrins, are characterized by their highly hydrophilicity. They are considered hydrophiles and contain three typical conserved motifs: K-(EKKGIMDKIKEKLP)G, Y-([V/T]D [E/Q]YGNP) and S-(serine-track) segments. Based on the

\* Correspondence: [linszhang@nwsuaf.edu.cn](mailto:linszhang@nwsuaf.edu.cn)

†Hao Liu, Ying Yang and Dandan Liu contributed equally to this work.

<sup>1</sup>College of Life Science/State Key Laboratory of Crop Stress Biology for Arid Areas, Northwest A&F University, Yangling 712100, China

Full list of author information is available at the end of the article



© The Author(s). 2020 **Open Access** This article is licensed under a Creative Commons Attribution 4.0 International License, which permits use, sharing, adaptation, distribution and reproduction in any medium or format, as long as you give appropriate credit to the original author(s) and the source, provide a link to the Creative Commons licence, and indicate if changes were made. The images or other third party material in this article are included in the article's Creative Commons licence, unless indicated otherwise in a credit line to the material. If material is not included in the article's Creative Commons licence and your intended use is not permitted by statutory regulation or exceeds the permitted use, you will need to obtain permission directly from the copyright holder. To view a copy of this licence, visit <http://creativecommons.org/licenses/by/4.0/>. The Creative Commons Public Domain Dedication waiver (<http://creativecommons.org/publicdomain/zero/1.0/>) applies to the data made available in this article, unless otherwise stated in a credit line to the data.

presence of these conserved sequences (K-, Y-, and S-segments), dehydrins are classified into the different subclasses: YnKn, YnSKn, KnS, SKn and Kn [2]. The wheat dehydrin *WZY2* investigated in the current study is a YSK2-type dehydrin belonging to the YnSKn subtype [3].

The basic helix-loop-helix (bHLH) proteins are the second largest superfamily of plant transcription factors and can play important roles in hormone signaling, photomorphogenesis, and secondary metabolism. This family is well known due to its conserved basic-helix-loop-helix structural domain consisting of two functional regions, the basic amino acid region and the helix-loop-helix region (HLH) located at the N-terminus and C-terminus of the bHLH domain, respectively. The basic amino acid region contains basic residues that can recognize and specifically bind the DNA motif in target genes [4]. The helix-loop-helix region consists of two amphipathic alpha helices linked by a loop with variable length and amino-acid composition, which can promote the formation of homodimers or heterodimers to control gene transcription [5].

According to previous studies on the bHLH proteins, these plant transcription factors are widely involved in the regulation of plant physiological and metabolic pathways. For example, bHLH factors play an important biological role in the regulatory network controlling anther development in *Arabidopsis thaliana* [6, 7]. In addition, bHLHs are also involved in plant responses to drought, salinity, and chilling abiotic stress. AtbHLH112, a nuclear-localized protein induced by salt, drought and abscisic acid (ABA), encodes a bHLH protein. AtbHLH112 serves as a transcriptional activator that regulates the expression of genes via binding to their GCG- or E-boxes to mediate physiological responses, including proline biosynthesis and ROS scavenging pathways, to enhance stress tolerance [8]. Moreover, a bHLH gene ThbHLH1 from *Tamarix hispida* can improve abiotic stress tolerance by enhancing osmotic potential and decreasing reactive oxygen accumulation [9].

Many previous studies, including our studies, have shown that wheat synthesizes dehydrins when under abiotic stress. However, the upstream regulatory mechanism and function of dehydrins thus far remains unclear. In this study, we have further explored the stress response mechanism of the *WZY2* (UniProt ID: B0LXL4) dehydrin based on our cloned promoter of *WZY2* from wheat "*ZhengYin 1#*" in water stress. *TabHLH49* (UniProt ID: A0A3B6RCI9) was isolated and identified in the wheat cDNA library treated with drought and cold stress by using the yeast one-hybrid system. *TabHLH49* protein encodes a basic helix-loop-helix (bHLH) transcription factor that functions as a positive regulator of *WZY2* dehydrin gene expression. This is the first detailed report of a bHLH involved in the mechanism of

dehydrin regulation under abiotic stress and clarifies its role in the *WZY2* dehydrin signaling pathway.

## Results

### Characterization of *TabHLH49* and bioinformatics analysis

In our previous study, we isolated a cDNA segment of bHLH49-like protein interacting with dehydrin *WZY2* promoter performed by yeast one-hybrid (Y1H) assay [10], the complete coding sequence was obtained via a BLAST search against the wheat genomic database, and this gene was named *TabHLH49*. *TabHLH49* encoded 440 amino acids with a predicted protein molecular weight of 47.54 kDa and an isoelectric point of 5.61 (Fig. 1a). This gene contained a conserved bHLH domain and belonged to the bHLH transcription factor family. The three-dimensional structure of *TabHLH49* was constructed by SWISS-MODLE software (Fig. 1c). The phylogenetic tree was constructed using *TabHLH49* and 162 bHLH gene sequences from *Arabidopsis thaliana* (Fig. 1b). The results indicated that *TabHLH49* was highly homologous to AtbHLH049 and was a Myc-type bHLH transcription factor.

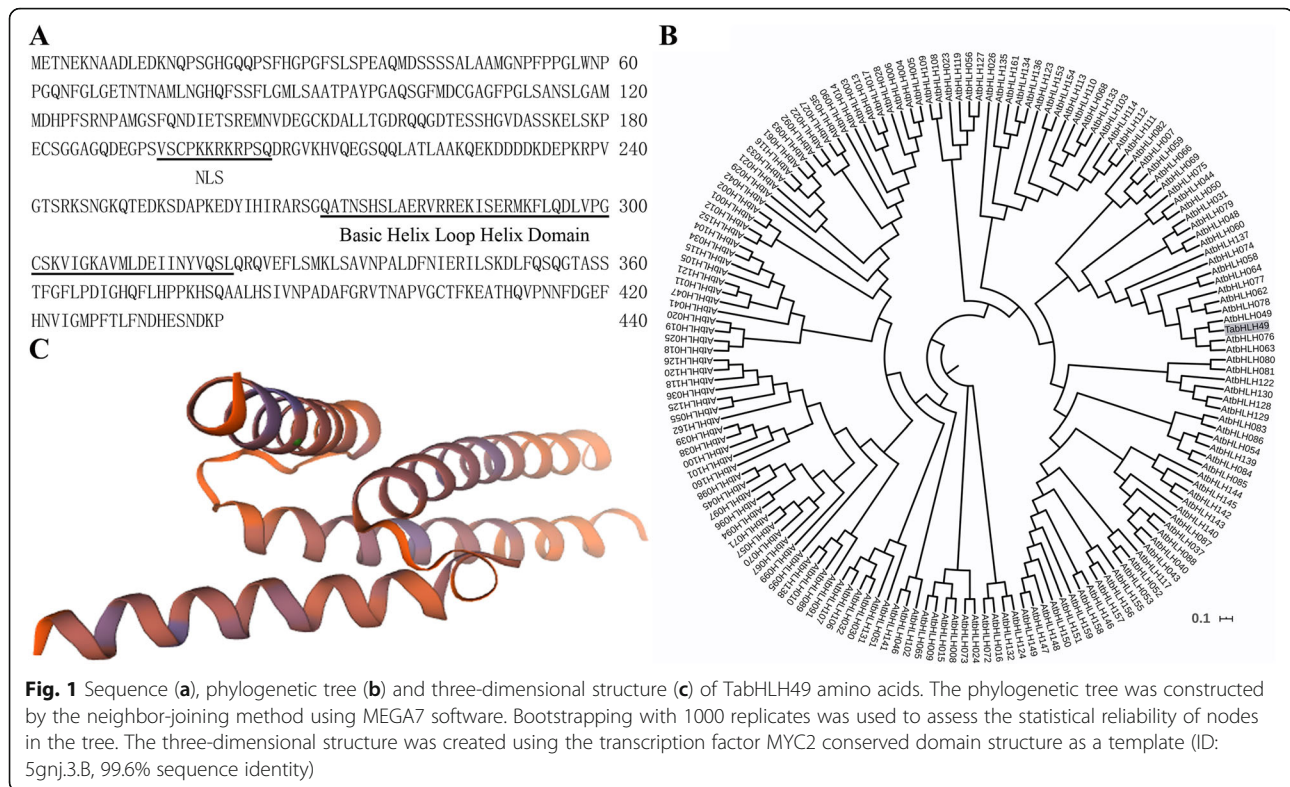
### Nuclear localization and transactivation activity of *TabHLH49*

According to the ProtComp prediction algorithm, the nuclear localization signal 'VSCPCKKRKRPSQ' was present in the amino acid sequence of *TabHLH49* (Fig. 1a). Therefore, *TabHLH49* may be a nuclear localization protein. To test this reasoning, the subcellular localization of *TabHLH49* was observed by coexpression of *TabHLH49*-GFP under the control of the 35S promoter. The recombinant vector was transformed into *Agrobacterium tumefaciens* strain GV3101 and then infiltrated into tobacco leaves. GV3101 cells transformed with the 35S:GFP vector were infiltrated into tobacco leaves as control. The results indicated that the green fluorescence of *TabHLH49*:GFP fusion protein was only in the nucleus of the tobacco epidermal cells, while the empty control was evenly distributed throughout the tobacco cells (Fig. 2a). This finding indicated that *TabHLH49* is specifically localized to the nucleus.

The transactivation activity of the *TabHLH49* protein was determined in Y2H Gold yeast cells. The expression of the reporter gene could not be activated when the C-terminus (amino acids 323–362) was absent, indicating that the amino acid sequences at the C-terminus (amino acids 323–362) are necessary for the transactivation activity of *TabHLH49* (Fig. 2c).

### Expression patterns analysis of *TabHLH49* and *WZY2* in wheat

Real-time PCR was used to detect the expression of *TabHLH49* in different tissues of wheat (Fig. 3a). The



results showed that *TabHLH49* was expressed in the roots, stems and leaves of 2-week-old seedlings. The expression of *TabHLH49* was abundantly accumulated in roots (1.71-fold) and leaves (2.89-fold) compared to stems.

Our previous studies showed that the expression of *WZY2* was highest in leaves during the wheat seedling stage [11]. Therefore, we selected the leaves of wheat seedlings to study the expression levels of *TabHLH49* and *WZY2* at different time points (0, 1, 4, 8 and 12 h) after PEG treatment (Fig. 3b). Real-time PCR results showed that the relative expression level of *TabHLH49* obviously increased over 1–12 h and reached the highest point, approximately a 31.6-fold change, at 12 h compared to 0 h. Interestingly, the expression of *WZY2* showed a similar tendency as *TabHLH49* but lagged behind *TabHLH49*. These results indicated that *TabHLH49* may positively regulate the expression of *WZY2*.

#### TabHLH49 is an upstream regulator of *WZY2*

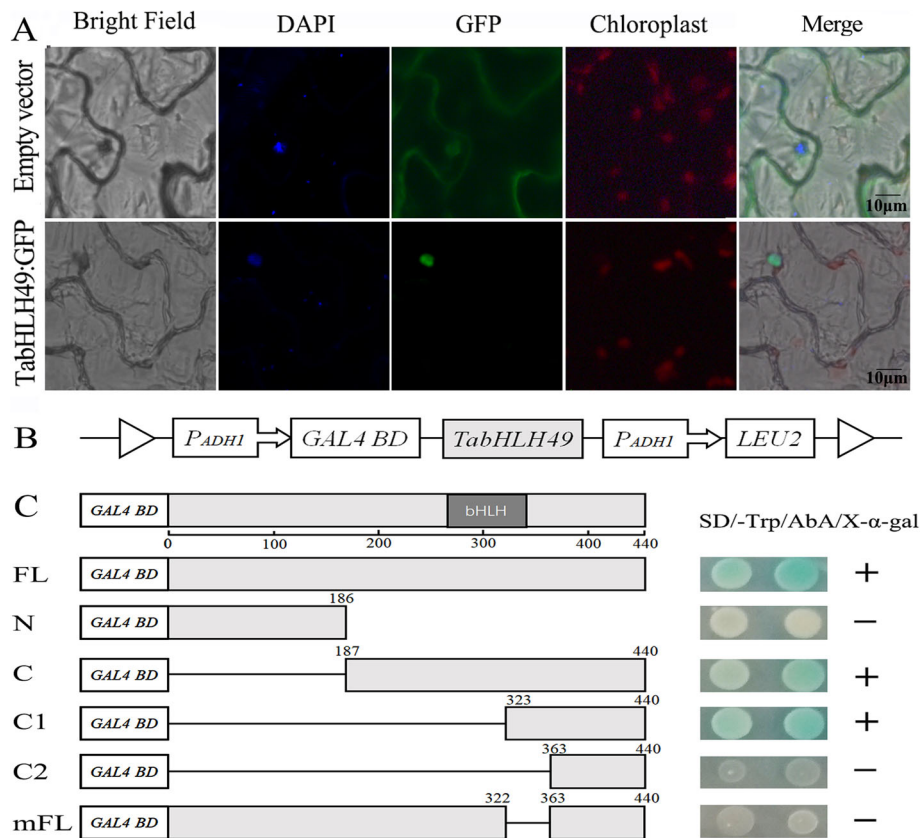
To examine the interaction between *TabHLH49* and the *WZY2* promoter (*Pwzy2*), we performed yeast one-hybrid and EMSA assays. The yeast one-hybrid results showed that Y1H Gold yeast cells containing pGADT7-*TabHLH49* could not grow on SD/-Leu/AbA<sup>200</sup> selective medium. However, Y1H Gold (*Pwzy2*) bait yeast strains containing pGADT7-*TabHLH49* were able to

grow on SD/-Leu and SD/-Leu/AbA<sup>200</sup> selective medium (Fig. 4a and Fig. S1). The EMSA experiments showed that the gel mobility of *Pwzy2* changed after incubation with *TabHLH49* protein (Fig. 4b and Fig. S2). These results indicated that *TabHLH49* is an upstream regulator of *WZY2*.

#### TabHLH49 positively regulates the expression of *WZY2* and improves the drought tolerance in wheat

To characterize the ability of *TabHLH49* to activate the *WZY2* gene, tobacco leaves were co-infiltrated with *A. tumefaciens* containing the 35S:*TabHLH49*:GFP vector together with a *Renilla luciferase* gene driven by the *WZY2* promoter. The *Luc/Fluc* ratio was significantly increased by simultaneous *TabHLH49*:GFP overexpression compared to GFP expression (Fig. 5b).

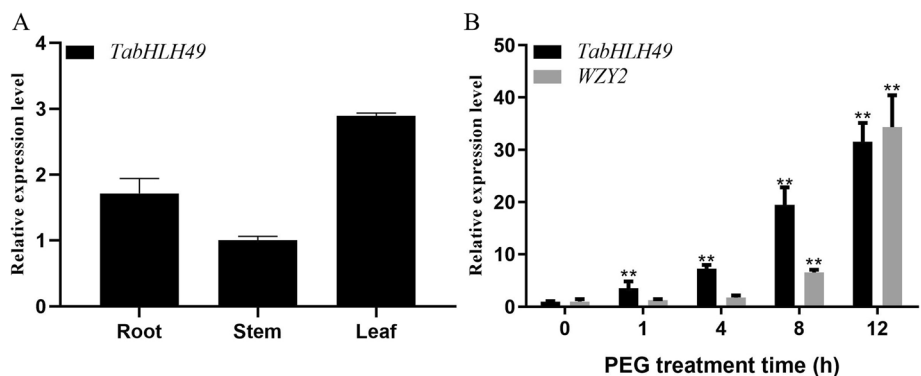
To explore the function of *TabHLH49* in wheat, *A. tumefaciens* GV3101 with 35S:*TabHLH49*:GFP (OE) and 35S:GFP (CK) were injected into wheat leaves for transient gene expression assays, as previously described [12, 13]. After natural drought for 10 d, the wheat leaves overexpressing GFP showed obvious wilting and curling; however, wheat that overexpressed *TabHLH49*:GFP showed better growth (Fig. 5c). Real-time PCR results showed that the expression of *TabHLH49* and *WZY2* was significantly increased in wheat leaves overexpressing *TabHLH49*:GFP compared to control after drought stress (Fig. 5d-e). We also determined the content of



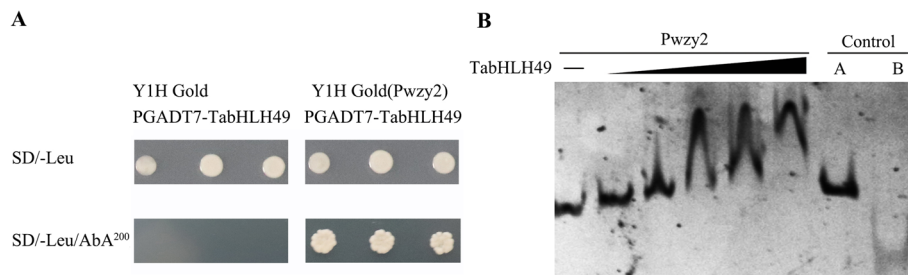
**Fig. 2** Subcellular localization (a) and transactivation assay (b and c) of TabHLH49 protein. **a** Subcellular localization of TabHLH49 in tobacco epidermal cells. GFP and TabHLH49:GFP under the control of the CaMV35S promoter were separately transiently expressed in tobacco epidermal cells. Scale bar = 10  $\mu$ m. **b** Diagram of the pGBKT7 construct that expressed different truncated TabHLH49 proteins in yeast. **c** Transactivation activities of the intact or truncated TabHLH49. Fusion proteins of the GAL4 DNA-binding domain and different portions of TabHLH49 were transformed into Y2H Gold cells and grown on SD/-Trp/X- $\alpha$ -gal/Aba plates to assess their transactivation activities

malondialdehyde (MDA), relative water content and chlorophyll content in the CK and OE lines (Fig. 5f-h). After drought stress, OE lines showed significantly lower MDA content, higher relative water content and higher chlorophyll content than CK lines.

We also explored the function of the *TabHLH49* gene in wheat using the barley stripe mosaic virus-induced gene silencing (BSMV-VIGS) technique. The BSMV construct, BSMV-TabHLH49, carrying a 459 bp fragment from the *TabHLH49* cDNA sequence, was used to



**Fig. 3** Expression patterns of *TabHLH49* and *WZY2* genes determined by real-time PCR. **a** Real-time PCR was used to analyze the expression levels of *TabHLH49* in different tissues. **b** Expression of *TabHLH49* and *WZY2* genes in response to 20% PEG 6000 treatment. The values are the mean  $\pm$  SD from three samples, and significant differences are indicated as  $p < 0.05$  (\*) and  $p < 0.01$  (\*\*)



**Fig. 4** TabHLH49 interacts with the promoter of *WZY2* (Pwzy2). **a** Interaction of TabHLH49 with the promoter of *WZY2* in the Y1H assay. **b** EMSA was performed to analyze the interactions between His6-TabHLH49 and the *WZY2* promoter. Increasing amounts of TabHLH49 (0.1, 0.2, 0.4, 0.6 and 0.8  $\mu$ M) were used. As negative controls, bovine serum albumin (BSA) instead of His6-TabHLH49 (control A) and (GAGCGTAACTGCCACCACTCACTGGCTCAGCGCTGCC) repeated tandem DNA fragment instead of the *WZY2* promoter (control B) were included in the binding assays

silence *TabHLH49* gene in wheat seed (Table S1). Wheat leaves photobleaching was observed in all plants infected with the BSMV-PDS construct at 10 days post inoculation (dpi), suggesting that the endogenous PDS gene was silenced (Fig. 6a). After natural drought for 10 d, the BSMV-TabHLH49 lines withered and curled more severely than the BSMV-0 and BSMV-PDS lines (Fig. 6a). Real-time PCR analysis showed that the transcript levels of *TabHLH49* and *WZY2* were reduced in the BSMV-TabHLH49 lines compared with the BSMV:0 and BSMV-PDS lines after drought stress (Fig. 6b-c). BSMV-TabHLH49 lines showed obviously higher MDA content, lower relative water content and lower chlorophyll content than BSMV-0 and BSMV-PDS lines after drought stress (Fig. 6d-f).

In addition, we also measured the water loss rate, relative water content and chlorophyll content of wheat leaves from wild-type, *TabHLH49*-OE and *WZY2*-RNAi wheat lines. *TabHLH49*-OE wheat showed the highest relative water and chlorophyll contents and lowest water loss rate compared with the wild-type and *WZY2*-RNAi wheat lines under drought stress, while the *WZY2*-RNAi lines showed the lowest relative water and chlorophyll contents and the highest water loss rate (Fig. 7a-c). These results indicated that TabHLH49 positively regulated dehydrin *WZY2* gene expression to improve drought resistance in wheat.

## Discussion

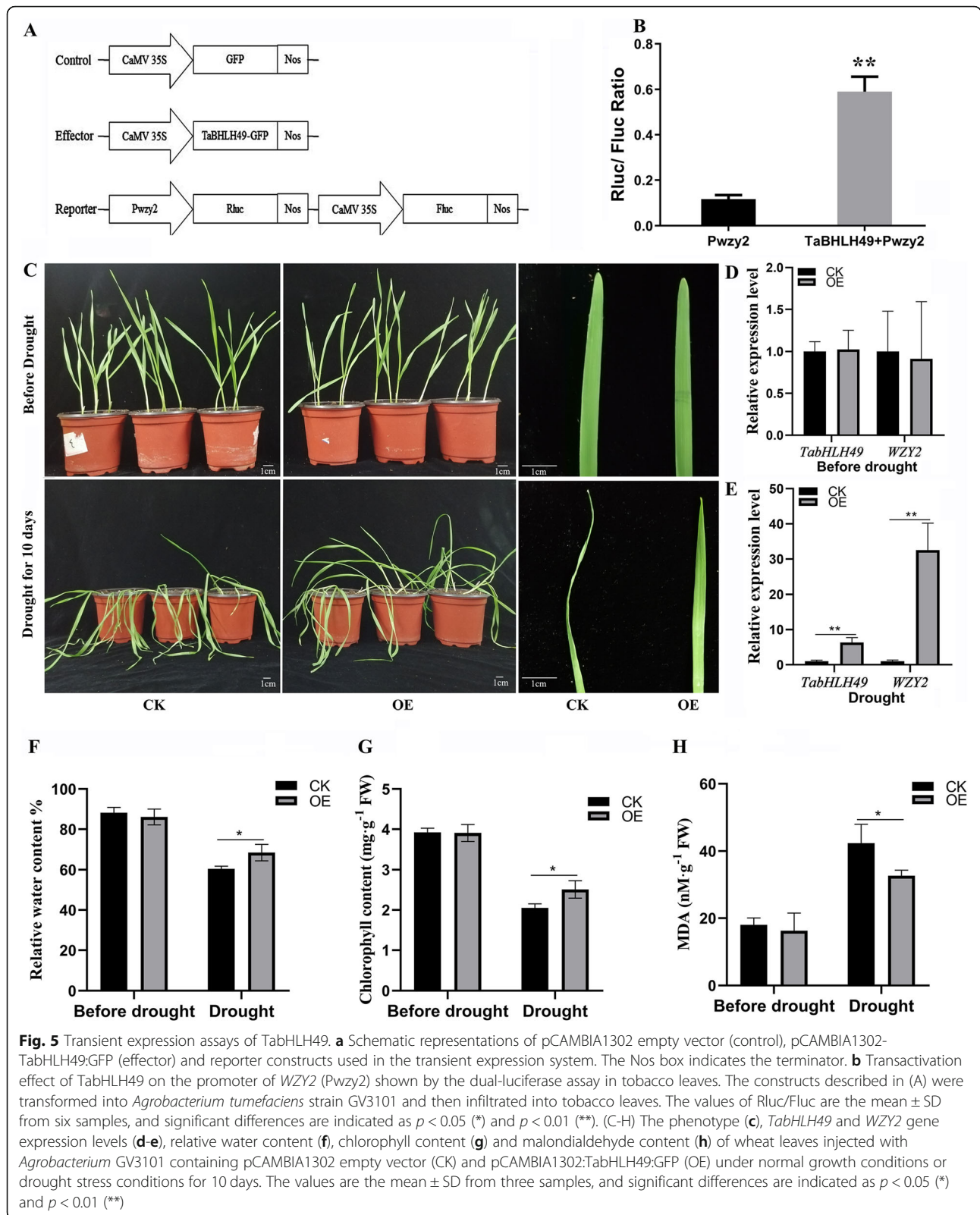
### *TabHLH49* encodes stress-responsive bHLH transcription factor and positively regulates wheat drought tolerance

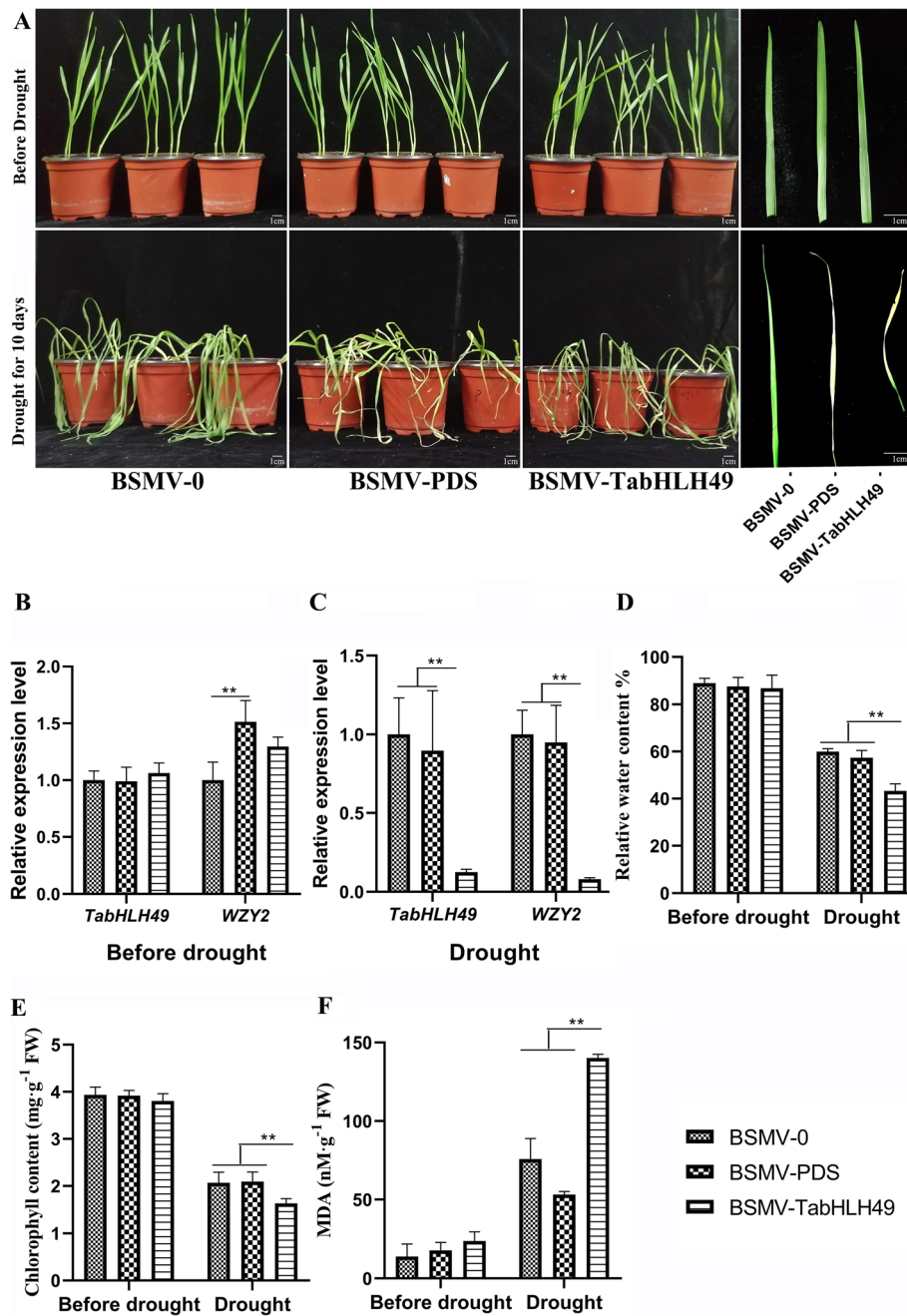
Transcription factors play an important function in regulating the drought response in plants. In *Arabidopsis*, many bHLH transcription factors are involved in the drought-induced stress response, such as *AtbHLH68* [14], *AtbHLH006* [15], *AtbHLH122* [16], *AtbHLH17* [17] and *AtbHLH92* [18]. However, only a few of bHLHs have been reported in wheat, such as *TabHLH1* [19] and *TabHLH39* [20], and the regulatory mechanism and

biological functions of many other TabHLH proteins remain unclear. Here, we obtained a novel wheat bHLH transcription factor, TabHLH49, through the yeast one-hybrid (Y1H) assay with the dehydrin *WZY2* promoter as bait. Phylogenetic analysis showed that TabHLH49 was highly homologous to *AtbHLH049* and was a Myc-type bHLH transcription factor (Fig. 1b). *TabHLH49* was obviously induced by drought stress (Fig. 3b), and it enhanced the tolerance to drought stress (Fig. 5c). Compared with the BSMV-0 lines, the BSMV-TabHLH49 lines displayed reduced tolerance to drought stress (Fig. 6a). These results demonstrated that TabHLH49 encodes a novel bHLH transcription factor that positively regulates drought tolerance in wheat.

### TabHLH49 positively regulates dehydrin *WZY2* gene expression

Transcription factors regulate the expression of downstream genes by binding *cis*-acting elements of the promoter. In our previous study, we identified G-box elements in the promoter of *WZY2* that bind the bHLH transcription factor [21]. EMSA and Y1H assays illustrated that TabHLH49 protein can bind and interact with the promoter of *WZY2* (Fig. 4). The real-time PCR results indicated that the expression pattern of *WZY2* was similar to *TabHLH49* but lagged behind *TabHLH49* (Fig. 3b). Thus, TabHLH49 is a potential positive regulator of *WZY2* expression. A dual-luciferase assay also confirmed this result (Fig. 5b). In transient expression analysis, the *WZY2* expression level was significantly increased under drought stress in TabHLH49-OE wheat lines compared to CK (Fig. 5e). Similarly, the *WZY2* expression level was significantly reduced in BSMV-TabHLH49 lines (Fig. 6c). In addition, TabHLH49 protein showed no transcriptional activity in yeast when the C-terminus (amino acids 323–362) was deleted (Fig. 2c). These results indicate that TabHLH49 positively regulates dehydrin *WZY2* gene expression.





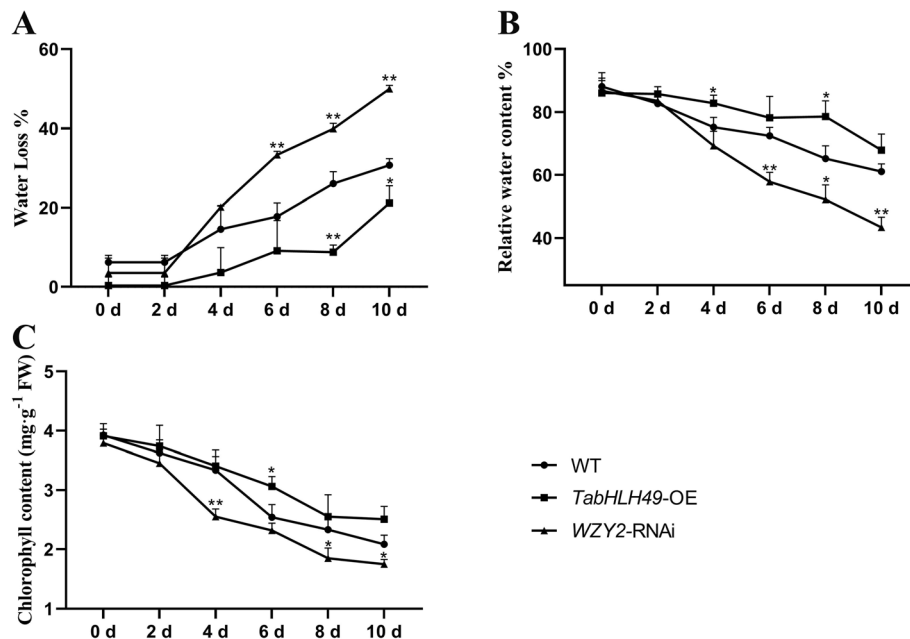
**Fig. 6** Virus-induced gene silencing (VIGS) of *TabHLH49* in wheat leaves. The phenotype (a), *TabHLH49* and *WZY2* gene expression levels (b-c), relative water content (d), chlorophyll content (e) and malondialdehyde content (f) of wheat leaves treated with BSMV-0 (empty vector), BSMV-PDS and BSMV-TabHLH49 under normal growth conditions or drought stress conditions for 10 days. The values are the mean  $\pm$  SD from three samples, and significant differences are indicated as  $p < 0.05$  (\*) and  $p < 0.01$  (\*\*)

Taken together, the results presented in this study provide evidence that *TabHLH49* positively regulates dehydrin *WZY2* gene expression to improve the drought resistance of wheat. We further need to develop stably overexpressed *TabHLH49* to identify whether this transcription factor participates in stress, which will facilitate

investigating the explicit role of *TabHLH49* in the dehydrin signaling pathway.

### Conclusions

This study demonstrates that the transcription factor *TabHLH49* positively regulates the expression level of



**Fig. 7** Determination of water loss rate, relative water content and chlorophyll content in *TabHLH49*-OE and *WZY2*-RNAi wheat lines. Water loss rate (a), relative water content (RWC%) (b) and chlorophyll content (c) of wheat leaves injected with *Agrobacterium* GV3101 containing pCAMBIA1302 empty vector (CK), pCAMBIA1302:TabHLH49:GFP (*TabHLH49*-OE) or *WZY2*-RNAi wheat lines. The values are the mean  $\pm$  SD from three samples, and significant differences are indicated as  $p < 0.05$  (\*) and  $p < 0.01$  (\*\*)

the *WZY2* gene via binding to its promoter, thereby enhancing the drought resistance in wheat. Our research provides a better understanding of the regulatory mechanism of the *WZY2* genes in response to drought stress and offers potential strategies for further crop breeding.

## Methods

### Yeast one-hybrid screening of *T.aestivum* cDNA libraries

The 619 bp *WZY2* promoter (*Pwzy2*) was cloned into the pAbAi vector, and the recombinant plasmids were transformed into Y1H Gold yeast cells as bait [10]. Two-week-old wheat seedlings exposed to either 12 h high PEG 6000 (20%) or cold (4 °C) treatments were used to construct the cDNA library. The extraction of mRNA was performed with the MiniBEST Plant RNA Extraction kit (Taraka). First-strand cDNA was synthesized by the SMART cDNA Library Construction Kit (Taraka). All fragments were linked to the vector pGADT7-AD and transformed into yeast bait strain Y1H Gold (*Pwzy2*) following the Yeast Protocols Handbook (Clontech). The transformed strains were cultured on SD/-Leu/AbA<sup>200</sup> medium. Yeast plasmid was extracted and amplified with the T7 and 3'AD sequencing primers. The amplicons were transformed into *Escherichia coli* and sequenced.

### Bioinformatics analysis of *TabHLH49*

The ORF of *TabHLH49* was identified in the wheat genomic database of the Ensembl servers ([http://plants.ensembl.org/Triticum\\_aestivum/Info/Index](http://plants.ensembl.org/Triticum_aestivum/Info/Index)).

The physiochemical characteristics were predicted by the ProtParam tool [22]. The basic helix-loop-helix conserved domain and the subcellular localization were found by the NCBI Conserved Domain database (<https://www.ncbi.nlm.nih.gov/cdd>) and ProtComp (<http://linux1.softberry.com/>), respectively. The Swiss-Model tool (<https://swissmodel.expasy.org/>) was used to predict the three-dimensional structure of the *TabHLH49* protein. The phylogenetic tree was constructed by the neighbor-joining method with 1000 bootstrap replicates in MEGA 7.0 software [23]. The amino acid sequences of the *wbHLH* transcription factors were obtained from a previous report [24].

### Subcellular localization of *TabHLH49*

To study the subcellular localization of *TabHLH49* protein, the *Agrobacterium* GV3101 carrying the recombinant plasmid pCAMBIA1302:TabHLH49:GFP and pCAMBIA1302 empty vector (control) were injected into *Nicotiana benthamiana* leaves. The fluorescence signal was observed in tobacco epidermal cells by fluorescence microscopy after culturing in the dark for 36 h at 28 °C.

### Analysis of *TabHLH49* transactivation

A transcript activation activity assay was carried out as previously reported [8]. The full-length and truncated fragments of *TabHLH49* were fused with GAL4 DNA-



binding domain of the pGBKT7 plasmid and transformed into yeast Y2H Gold cells, and then grown on SD-Trp/X- $\alpha$ -gal/AbA plates to examine their growth and  $\alpha$ -galactosidase activity.

#### Plant materials and growth conditions

Wheat seeds of “ZhengYin 1#” were used throughout this study. Growth condition of wheat plants and 20% PEG6000 treatment were the same as that described in our previous study [25].

#### RNA isolation and real-time PCR analysis

The protocol of RNA isolation and real-time PCR were described as our previous study [25]. All real-time PCR reactions were performed in triplicate to ensure reproducibility of the results.

#### Expression of fusion TabHLH49 protein and purification

TabHLH49 was cloned into pET-28a vector, and recombinant plasmid was transformed into competent BL21 (DE3) cells. The expression of recombinant protein was induced with 1 mM isopropyl  $\beta$ -D-1-thiogalactopyranoside (IPTG) for 6 h after the recombinant *E. coli* density reached an OD<sub>600</sub> of 0.6 in LB liquid medium containing with 50  $\mu$ g/mL kanamycin at 37 °C. The cells were harvested by centrifugation and were resuspended in phosphate-buffered saline (PBS), followed by ultrasonic cell disruption for 30 min. The TabHLH49 protein was purified using ProteinIso™ Ni-NTA resin (TransGen) and detected by SDS-PAGE.

#### Electrophoretic mobility shift assay

EMSA was performed with the LightShift® Chemiluminescent EMSA Kit (Thermo Fisher Scientific) following the manufacturer’s protocol. The 619 bp region of the WZY2 promoter sequences were amplified using gene-specific primers (Table S1) and then purified and quantified. The WZY2 promoter was reacted with the purified TabHLH49 protein at room temperature for 30 min. The complexes were then separated by native 6% polyacrylamide gel electrophoresis.

#### Dual-luciferase assay

To investigate the transactivation role of TabHLH49 on the target WZY2 promoter, a dual-luciferase assay was conducted according to previously reported [26]. The promoter of WZY2 was cloned into the dual-luciferase report vector pC0390-RUC and transformed into *Agrobacterium* GV3101 and then injected together with either pCAMBIA1302:TabHLH49:GFP (effector) or pCAMBIA1302 empty vector (control) into tobacco leaves. After incubation for 3 d, the leaves were ground in liquid nitrogen and then mixed with passive lysis buffer at room temperature for 30 min. After centrifugation,

the supernatant was collected and assessed for luciferase activity (RLuc/Fluc) using the Dual-Luciferase® Reporter Assay System (Promega).

#### Transient expression analysis of TabHLH49

The *Agrobacteria* GV3101 transformed with the pCAMBIA1302:TabHLH49:GFP and pCAMBIA1302 empty vector (control) were injected into wheat leaves for transient gene expression assays, as previously described [12, 13]. Fresh *Agrobacteria* were grown overnight in yeast extract broth (YEB) medium with rifampicin, carbenicillin, and spectinomycin. After centrifugation, the bacterial pellets were resuspended in an infiltration buffer containing 10 mM MES, 10 mM MgCl<sub>2</sub>, and 400  $\mu$ M acetosyringone at an optical density of OD<sub>600</sub> = 2.0. For wheat infiltration, the fully expanded secondary leaf of wheat seedlings was infiltrated using a 1 mL syringe without a needle. Plant phenotypes were examined between 5 and 14 d after infiltration.

#### BSMV-mediated TabHLH49 gene silencing

In vitro transcription of viral RNA and plant inoculations were performed as previously described [27]. Four plants of wheat were infected with BSMV-PDS (positive control) or BSMV-TabHLH49 construct, with inoculation with BSMV:0 (negative control) was used as a control in each experiment. This experiment was repeated three times, and the data were averaged.

#### Determination of malondialdehyde (MDA), water loss, relative water content and chlorophyll content

Determination of the malondialdehyde (MDA) content, the water loss rate, the relative water content and the chlorophyll content of wheat leaves after drought stress was performed as previously described [11, 28, 29].

#### Supplementary information

Supplementary information accompanies this paper at <https://doi.org/10.1186/s12870-020-02474-5>.

**Additional file 1: Table S1.** Specific primers used in the study.

**Additional file 2: Figure S1.** Raw images of Fig. 4a.

**Additional file 3: Figure S2.** Raw images of Fig. 4b.

#### Abbreviations

bHLH: Basic helix-loop-helix transcription factor; Pwzy2: Promoter of the dehydrin WZY2 gene; ABA: Abscisic acid; EMSA: Electrophoretic mobility shift assay; RLuc: Renilla luciferase; Fluc: Firefly luciferase; AbA: Aureobasidin A; Y1H: Yeast one-hybrid; IPTG: Isopropyl  $\beta$ -D-1-thiogalactopyranoside; MDA: Malondialdehyde; VIGS: Virus-induced gene silencing

#### Acknowledgements

We acknowledge Dr. Tianyong Zhao from Northwest A&F University for providing a dual-luciferase reporting vector and Dr. Zhensheng Kang from Northwest A&F University for providing the BSMV-VIGS vector. We also acknowledge the National Natural Science Foundation of China (No. 31671608).

**Authors' contributions**

Designed the experiment: HL and LZ. Performed the experiments and analyzed data: HL and YY. Contributed reagents/materials/analysis tools: LZ. Wrote the manuscript: HL, YY, XW and DL. All authors read and approved the manuscript.

**Funding**

Our research was funded by the National Natural Science Foundation of China (Grant No. 31671608). The funding agencies had no role in the experimental design, data collection and analysis or preparation of the manuscript.

**Availability of data and materials**

The datasets generated and analysed during the current study are available in the UniProt database with the link of <https://www.uniprot.org/>, under the accession number B0LXL4 and A0A3B6RC19, respectively. The sequences of WZY2 promoter can be found in the additional files of our previous study with the link of <https://doi.org/10.1080/15592324.2019.1678370>.

**Ethics approval and consent to participate**

Not applicable.

**Consent for publication**

Not applicable.

**Competing interests**

The authors declare that they have no competing interests.

**Author details**

<sup>1</sup>College of Life Science/State Key Laboratory of Crop Stress Biology for Arid Areas, Northwest A&F University, Yangling 712100, China. <sup>2</sup>College of Nursing, Weinan Vocational&Technical College, Weinan 714000, China. <sup>3</sup>School of Agriculture, Yunnan University, Kunming 650000, China. <sup>4</sup>Institute of Evolution & Marine Biodiversity, Ocean University of China, Qingdao 266000, China.

Received: 9 October 2019 Accepted: 27 May 2020

Published online: 05 June 2020

**References**

- Battaglia M, Olvera-Carrillo Y, Garcarrubio A, Campos F, Covarrubias AA. The enigmatic LEA proteins and other hydrophilins. *Plant Physiol.* 2008; 148(1):6–24.
- Garay-Arroyo A, Colmenero-Flores JM, Garcarrubio A, Covarrubias AA. Highly hydrophilic proteins in prokaryotes and eukaryotes are common during conditions of water deficit. *J Biol Chem.* 2000;275(8):5668–74.
- Yu Z, Wang X, Zhang L. Structural and Functional Dynamics of Dehydrins: A Plant Protector Protein under Abiotic Stress. *Int J Mol Sci.* 2018;19(11):3420.
- Atchley WR, Terhalle W, Dress A. Positional dependence, cliques, and predictive motifs in the bHLH protein domain. *J Mol Evol.* 1999;48(5): 501–16.
- Nair SK, Burley SK. Recognizing DNA in the library. *Nature.* 2000;404(6779): 715–717.
- Zhang W, Sun Y, Timofejeva L, Chen C, Grossniklaus U, Ma H. Regulation of *Arabidopsis* tapetum development and function by *DYSFUNCTIONAL TAPETUM1 (DYT1)* encoding a putative bHLH transcription factor. *Development.* 2006;133(16):3085–95.
- Heisler M, Atkinson A, Bylstra YH, Walsh R, Smyth DR. *SPATULA*, a gene that controls development of carpel margin tissues in *Arabidopsis*, encodes a bHLH protein. *DEVELOPMENT.* 2001;128(7):1089–98.
- Liu Y, Ji X, Nie X, Qu M, Zheng L, Tan Z, Zhao H, Huo L, Liu S, Zhang B, et al. *Arabidopsis* AtbHLH12 regulates the expression of genes involved in abiotic stress tolerance by binding to their E-box and GCG-box motifs. *New Phytol.* 2015;207(3):692–709.
- Ji X, Nie X, Liu Y, Zheng L, Zhao H, Zhang B, Huo L, Wang Y. A *bHLH* gene from *Tamarix hispida* improves abiotic stress tolerance by enhancing osmotic potential and decreasing reactive oxygen species accumulation. *Tree Physiol.* 2016;36(2):193–207.
- Liu H, Liu H, Yang Y, Zhang L. Identification of upstream transcription factors and an interacting PP2C protein of dehydrin *WZY2* gene in wheat. *Plant Signal Behav.* 2019;14(12):1678370.
- Yu Z, Wang X, Mu X, Zhang L. RNAi mediated silencing of dehydrin gene *WZY2* confers osmotic stress intolerance in transgenic wheat. *Funct Plant Biol.* 2019;46:877–84.
- Lu X, Kracher B, Saur IML, Bauer S, Ellwood SR, Wise R, Yaeno T, Maekawa T, Schulze-Lefert P. Allelic barley MLA immune receptors recognize sequence-unrelated avirulence effectors of the powdery mildew pathogen. *Proc Natl Acad Sci.* 2016;113(42):E6486–95.
- Gao J, Bi W, Li H, Wu J, Yu X, Liu D, Wang X. *WRKY* transcription factors associated with *NPRI*-mediated acquired resistance in barley are potential resources to improve wheat resistance to *Puccinia triticina*. *Front Plant Sci.* 2018;9:1486.
- Le Hir R, Castelain M, Chakraborti D, Moritz T, Dinant S, Bellini C. *AtbHLH68* transcription factor contributes to the regulation of ABA homeostasis and drought stress tolerance in *Arabidopsis thaliana*. *Physiol Plantarum.* 2017; 160(3):312–27.
- Abe H, Urao T, Ito T, Seki M, Shinozaki K, Yamaguchi-Shinozaki K. *Arabidopsis* AtMYC2 (bHLH) and AtMYB2 (MYB) function as transcriptional activators in abscisic acid signaling. *Plant Cell.* 2003;15(1):63–78.
- Liu W, Tai H, Li S, Gao W, Zhao M, Xie C, Li WX. *bHLH122* is important for drought and osmotic stress resistance in *Arabidopsis* and in the repression of ABA catabolism. *New Phytol.* 2014;201(4):1192–204.
- Babitha KC, Ramu SV, Pruthvi V, Mahesh P, Nataraja KN, Udayakumar M. Co-expression of *AtbHLH17* and *AtWRKY28* confers resistance to abiotic stress in *Arabidopsis*. *Transgenic Res.* 2013;22(2):327–41.
- Jiang Y, Yang B, Deyholos MK. Functional characterization of the *Arabidopsis* bHLH92 transcription factor in abiotic stress. *Mol Gen Genomics.* 2009;282(5):503–16.
- Yang T, Yao S, Hao L, Zhao Y, Lu W, Xiao K. Wheat bHLH-type transcription factor gene *TabHLH1* is crucial in mediating osmotic stresses tolerance through modulating largely the ABA-associated pathway. *Plant Cell Rep.* 2016;35(11):2309–23.
- Zhai Y, Zhang L, Xia C, Fu S, Zhao G, Jia J, Kong X. The wheat transcription factor, *TabHLH39*, improves tolerance to multiple abiotic stressors in transgenic plants. *Biochem Biophys Res Commun.* 2016;473(4):1321–7.
- Zhu W, Zhang L, Lv H, Zhang H, Zhang D, Wang X, Chen J. The dehydrin *wzy2* promoter from wheat defines its contribution to stress tolerance. *Funct Integr Genomic.* 2014;14(1):111–25.
- Garg VK, Avasthi H, Tiwari A, Jain PA, Ramkete PW, Kayastha AM, Singh VK. MFPP1 - multi FASTA ProtParam Interface. *Bioinformatics.* 2016;12(2):74–7.
- Kumar S, Stecher G, Tamura K. MEGA7: molecular evolutionary genetics analysis version 7.0 for bigger datasets. *Mol Biol Evol.* 2016;33(7):1870–4.
- Guo X, Wang J. Global identification, structural analysis and expression characterization of bHLH transcription factors in wheat. *BMC Plant Biol.* 2017;17(1):90.
- Liu H, Xing M, Yang W, Mu X, Wang X, Lu F, Wang Y, Zhang L. Genome-wide identification of and functional insights into the late embryogenesis abundant (LEA) gene family in bread wheat (*Triticum aestivum*). *Sci Rep UK.* 2019;9(1):13375.
- Chen K, Du L, Liu H, Liu Y. A novel R2R3-MYB from grape hyacinth, MaMybA, which is different from MaAN2, confers intense and magenta anthocyanin pigmentation in tobacco. *BMC Plant Biol.* 2019;19(1):390.
- Holzberg S, Brosio P, Gross C, Pogue GP. Barley stripe mosaic virus-induced gene silencing in a monocot plant. *Plant J.* 2002;30(3):315–27.
- Kang H, Zhang M, Zhou S, Guo Q, Chen F, Wu J, Wang W. Overexpression of wheat ubiquitin gene, *ta-Ub2*, improves abiotic stress tolerance of *Brachypodium distachyon*. *Plant Sci.* 2016;248:102–15.
- Zhang G, Zhang M, Zhao Z, Ren Y, Li Q, Wang W. Wheat TaPUB1 modulates plant drought stress resistance by improving antioxidant capability. *Sci Rep UK.* 2017;7(1):7549.

**Publisher's Note**

Springer Nature remains neutral with regard to jurisdictional claims in published maps and institutional affiliations.